

## **PART 5 : TEXTURE : PUBLIC DOMAIN CONCEPTS**

“The Waterfront Precinct will become the tourism hub of The Entrance. It is a lively, exciting place with a carnival atmosphere that is active 24/7, rail, hail or shine.”



**LEGEND**

- 1 The Town Green
- 1a Entry/Exits to Town Green
- 2 Anzac Square
- 2a War Memorial
- 2b Picnic and BBQ Area
- 3 The Waterfront Playground
- 3a Water feature
- 3b Vera's Water Garden
- 3c Playground
- 3d Historic Carnival
- 3e Historic Carnival Entry
- 3f Cafes
- 3g Cafe booths
- 3h Tourist Information Centre
- 3i Pelican Feeding Amphitheatre
- 4 Bandstand Forecourt
- 4a Bandstand and Green
- 4b Public Art/Clock tower
- 4c Access to Public Carpark
- 5 Gateway/Threshold
- 5a Fishermans Wharf
- 5b Timber Decks
- 5c Marketplace - Multiuse Space A
- 5d Multiuse stage
- 5e Lawn/Turf
- 5f Paved surface for heavy traffic
- 6 Public Amenities
- 6a Share zone for use during festivals and events

Final design of Anzac Square and the western edge of the Village Green should be integrated into the design and construction of the Key Site.

- Waterfront Precinct
- Waterfront Precinct West
- Waterfront Precinct East

**THE WATERFRONT PRECINCT WEST MASTERPLAN**

**THE ENTRANCE TOWN CENTRE MASTERPLAN**



## THE WATERFRONT PRECINCT WEST PRINCIPLES & RECOMMENDATIONS

**The Waterfront Precinct will become the tourism hub of The Entrance. It is a lively, exciting place with a carnival atmosphere that is active 24/7, rail, hail or shine**

### PRINCIPLES

- Open the foreshore to views of the lake and the ocean;
- Develop and strengthen the successful elements of this precinct and remove the unsuccessful elements;
- Improve pedestrian connectivity to and within the waterfront precinct;
- Create flexible spaces that can be adapted for multiple uses;
- Create an iconic waterfront that will attract tourists and permanent residents;
- Establish this as an Accessible Precinct;
- Create a progression of spaces along the waterfront that connect people to Waterfront Precinct East.



### RECOMMENDATIONS

#### THE TOWN GREEN (MEMORIAL PARK): MULTIUSE SPACE A

- Establish the Town Green as a multi use space suitable for entertainment, festivals and other community activities. Increase the footprint of the Town Green to increase its active space and provide greater integration with the waterfront;
- Improve the quality of the turf by providing a trafficable shared zone around its edge. This zone should be wide enough to accommodate a parked vehicle for unloading and space to pass the parked vehicle;
- Investigate demolishing and relocating of the existing stage and visitor information centre;
- Construct a new stage that services both the Town Green and Marketplace. The stage will be capped with lightweight sails to provide sun protection and reinforce the coastal theme.
- Investigate reclamation of The Entrance Channel to provide for extension of The Town Green (Memorial Park).

#### MARKETPLACE - MULTI USE SPACE B

- Marketplace is a multi use space that complements the Town Green (Multi Use Space A). In contrast, Marketplace is paved to provide an all weather surface for markets and other visiting attractions including car shows. Marketplace will be tree lined to provide shelter and shade;
- Where events are large the activities can spill into the Town Green and/or utilise Marine Parade;
- A new public amenities block defines the eastern end that will serve Waterfront Precinct East & West.

#### ANZAC SQUARE

- Close the Marine Parade to improve the accessibility and usability of this precinct.
- Establish Anzac Square as the extension to Memorial Park and the War Memorial. This square can be used for Anzac day ceremonies and other relevant events. Anzac Square is the first introduction to the Waterfront Precinct and is a key destination. The square will reinforce the entry to the key site adjacent.

#### THE WATERFRONT PLAYGROUND

- Define a sub precinct west of the Town Green as the Waterfront Playground. This sub precinct includes a collection of activities for children that reinforce a carnival atmosphere and are clustered between the cafes and the Pelican Feeding Amphitheatre. Its activities include Vera's Water Garden, a Childrens Playground, and a Historic Carnival Precinct which includes the heritage listed carousel.
- The Waterfront Playground builds upon the success of Vera's Water Garden and accommodates an expansion and upgrade of its facilities. The water garden will be extended west to become part of the entry gateway to the precinct. Night activation is an important principle of urban revitalisation therefore, the Masterplan proposes that the upgrade of the Water Garden will include lighting and water displays that are integrated with the Water Walk and Sunrise Bridge. To accommodate seasonal changes, design parts of the Water Garden to become dry during winter. This can transform these into Public Art elements.



- The Pelican Feeding Amphitheatre will remain in its current location as it will be difficult to attract the birds to a new location. The amphitheatre will be upgraded to match the proposed paving in the adjoining areas and signage will be improved.
- The cafes currently fronting the Waterfront Playground feature covered hedged dining booths. These booths turn patrons backs to the 'pedestrian street' and disrupt views of the lake and ocean. The Masterplan proposes to retain the booths but remove the hedges.

**BAND STAND FORECOURT**

- The western end of the waterfront has had difficulties realising its potential. The stage and the heritage listed carousel have been placed in locations that see little use or appear awkward and 'in the way'. For this reason the masterplan proposes to remove the stage and replace with an open space that correlates with the entry to the Hotel, The Entrance Pub and Fisherman's Wharf. This is an important space as it give the first impression of this precinct when visitors walk through from the public carpark.
- The masterplan proposes two key elements in this space. The first being a Bandstand in the traditional style. The Bandstand is an object in the round within a green lawn that will reinforce 'classic' coastal themes. Performances can be viewed from this lawn. The Bandstand is central to this space and can be viewed from key areas without becoming obtrusive. It will also be in keeping with the carnival theme adjacent.
- The second element is a public art site and clock tower. These objects define this as a meeting place and it give a sense of scale to the pedestrian street.

**GATEWAYS AND THRESHOLDS**

- Three gateways have been proposed for the site. These gateways are located in spaces where the buildings narrow and create a sense of enclosure. The sense of compression will create a feeling of excitement and anticipation upon entry. We propose lighting these space from above to reduce the potential obstructions on the ground and to reinforce the experience of entering into a new space. Clearly defined thresholds are useful in instructing people about how they should behave in these spaces and increase perceptions of safety and security.



*Bright and colourful methods can be adopted to connect precincts severed by bridges.*



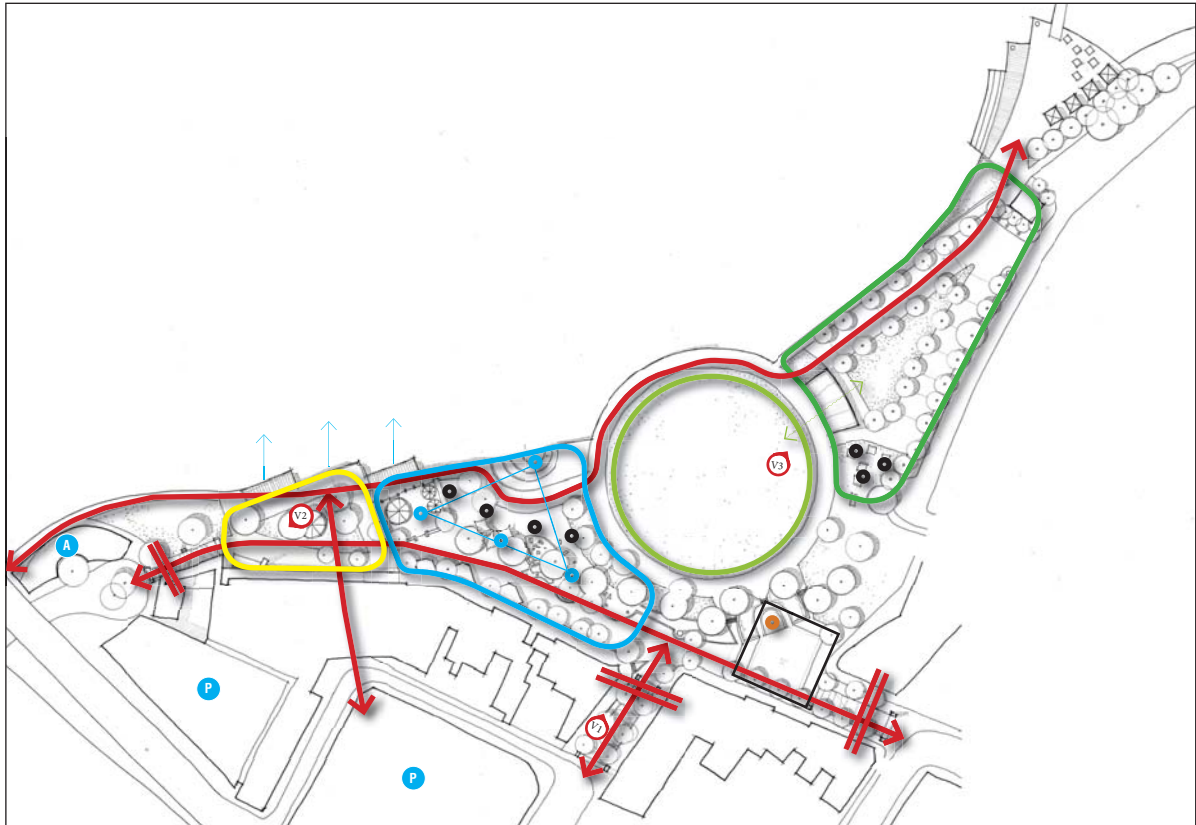
*The Water Walk becomes the missing link in the NSW Cycleway Link*



*An enhanced Water Garden could build upon its existing success.*

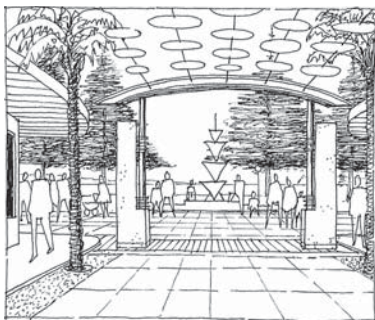


*These festive lights could be used to define the "thresholds" into the Waterfront Precinct*

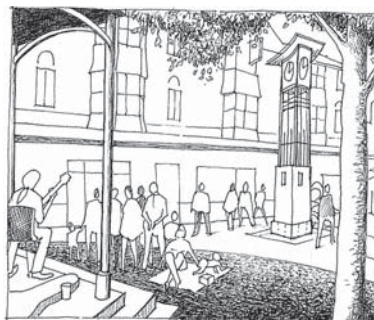


**THE WATERFRONT PRECINCT - WEST SPATIAL ANALYSIS**

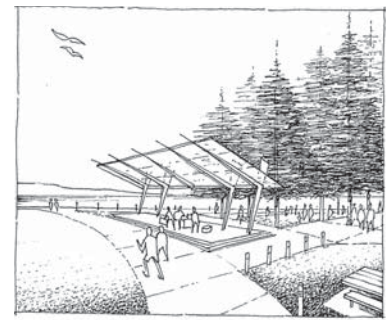
- |                       |                 |                       |                |
|-----------------------|-----------------|-----------------------|----------------|
| BANDSTAND FORECOURT   | TOWN GREEN      | ANZAC SQUARE          | PUBLIC PARKING |
| WATERFRONT PLAYGROUND | THRESHOLDS      | WATERPLAYGROUND LINKS | AMENITIES      |
| MARKETPLACE           | PEDESTRIAN LINK | PUBLIC SEATING/PICNIC | War Memorial   |
|                       |                 |                       | Vignette View  |



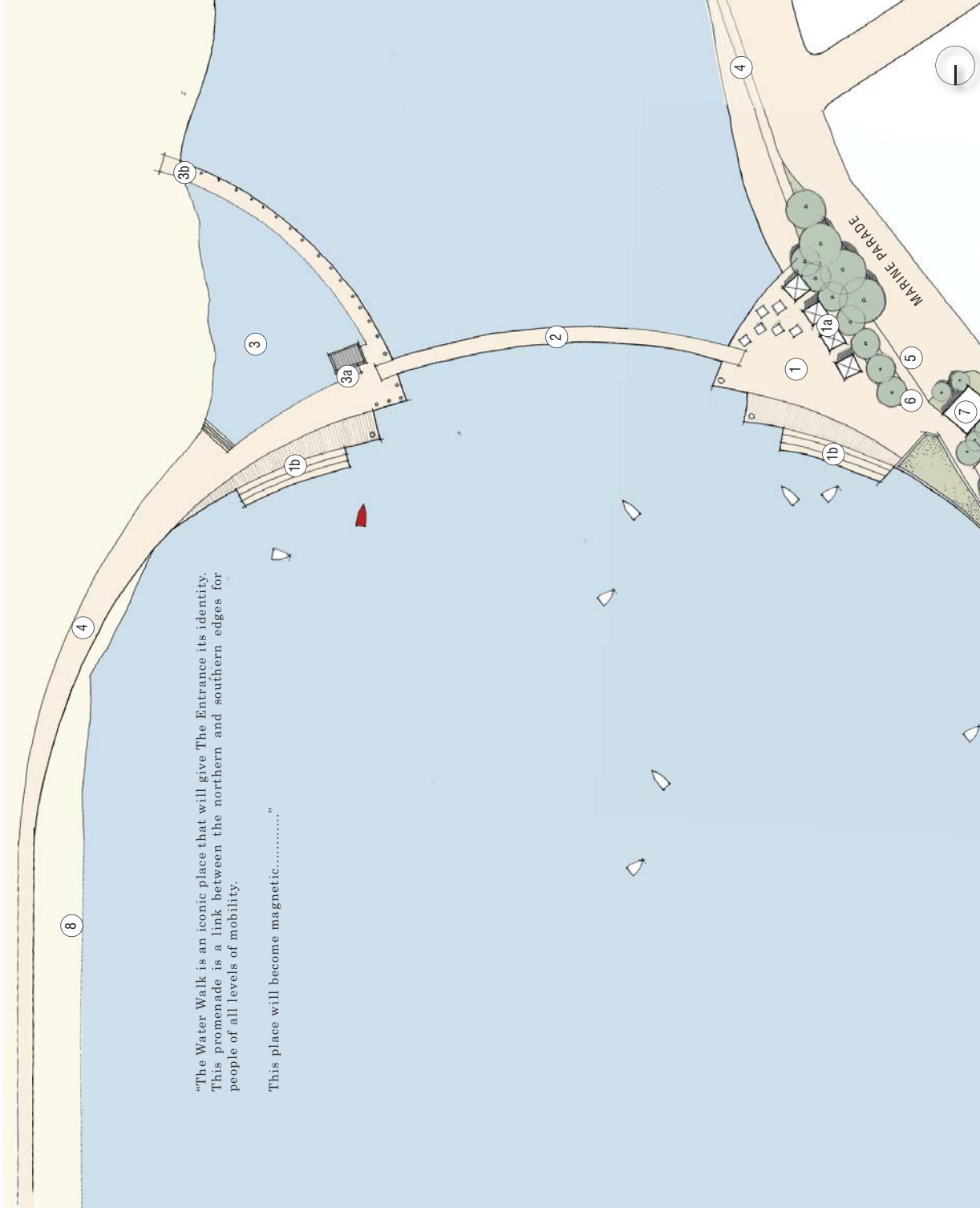
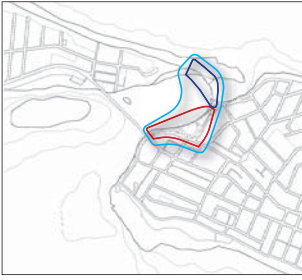
View 1: Public Art Sculpture and Threshold



View 2: The Bandstand Forecourt featuring Clock Tower



View 3: The new stage that is the link between the Town Green & Marketplace



"The Water Walk is an iconic place that will give The Entrance its identity. This promenade is a link between the northern and southern edges for people of all levels of mobility.

This place will become magnetic....."

- LEGEND**
- 1 The Pier
  - 1a Concession Stands
  - 1b Water Steps
  - 2 The Water Walk and Sunrise Bridge
  - 3 The Lake Splash Pool
  - 3a Solar Tower
  - 3b Connection to North Entrance Beach
  - 4 Pedestrian Cyclepath
  - 5 Disabled Carparking
  - 6 Cycle Parking
  - 7 Public Amenities
  - 8 Karagi Beach
- ▭ Waterfront Precinct  
▭ Waterfront Precinct West  
▭ Waterfront Precinct East

**THE WATERFRONT PRECINCT EAST MASTERPLAN**

**THE ENTRANCE TOWN CENTRE MASTERPLAN**

## THE WATERFRONT PRECINCT EAST PRINCIPLES & RECOMMENDATIONS

**The Water Promenade is an iconic place that will give The Entrance its identity. The Promenade will provide a mix of active spaces and quiet places and most importantly provide a link between the northern and southern edges for pedestrians and cyclists. The Water Promenade will become a magnet for residents and tourists alike.**

### PRINCIPLES

- Give The Entrance an Iconic Landmark development that is public not private;
- Connect the northern and southern edges of The Entrance for pedestrians and emergency vehicles;
- Create places for recreation and employment;
- Create an international attraction to draw tourists and residents;
- Create spaces that encourage use of the lake and interaction with its beaches;
- Reinforce the concept of “Accessible Entrance”.



### RECOMMENDATIONS

#### THE PIER

- The Pier becomes the landward anchor to the Water Front Precinct and the Water Walk. The Pier will be activated with a cafe and small concession stands that can sell ice-cream, coffee and softdrink that would be associated with the beach and a sun drenched promenade. The pier will be lined with palms to along the southern edge to continue the theme in the town centre.

#### THE WATER WALK & SUNRISE BRIDGE

- The Water Walk will link the town edges of the township together in the form of a pedestrian promenade. The Water Walk’s name stems from the pedestrians walk over water to the destination on the other side - the pool, Karagi Park, Dunleith Park, Terilbah Park and North Entrance beach. The form of the Water walk should represent the character of The Entrance. The artists impression shown in an indicative concept showing one potential form. Described as the Sunrise Bridge, the form reflects the rise of the early morning sun, from which the view would be spectacular. There is an opportunity to engage the services of a renowned international sculptor to collaborate in the design of the bridge. This collaboration could result in a unique piece of public art as well as bring The Entrance to the world stage - encouraging new residents and tourists.
- This concept is indicative in form and location. This should go through a design competition to increase awareness of The Entrance. This has been successful in other countries of which Bilbao, Spain is recognised for the Guggenheim.

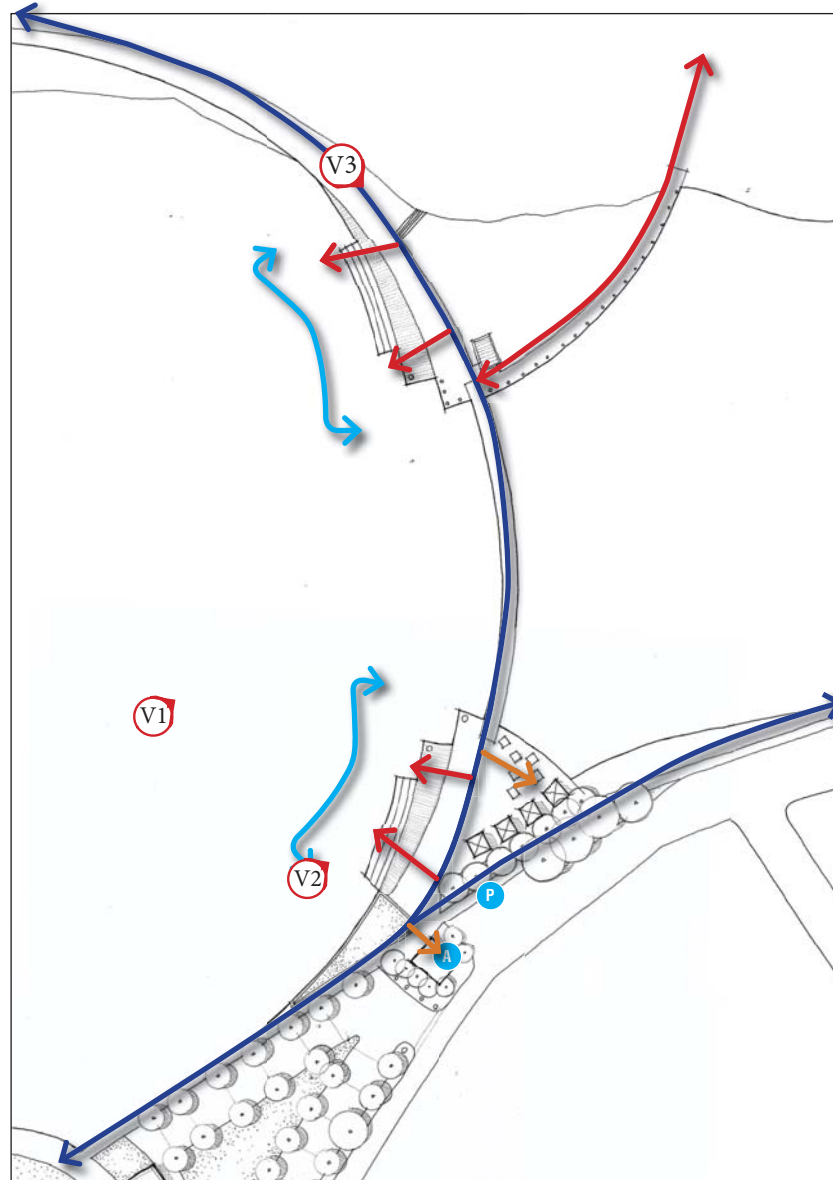
#### THE LAKE SPLASH POOL

- The Lake Splash Pool is a destination for the northern edge of The Entrance and provides a location for ‘beach swimming’ in a safe and secure environment. Tourists and Residents often feel insecure at the thought of swimming in the ocean and will avoid doing so. This pool has a different purpose to the Ocean Baths which are designed for lap swimming. These two uses often conflict as their purposes are very different and character of the splash pool will be playful and exciting.

#### THE SOLAR TOWER

- The Solar Tower will generate energy to power the lighting for the Waterfront Precinct. Any unused energy can be fed back into the grid.





**MOVEMENT ANALYSIS**

- |  |                                     |  |  |  |                  |
|--|-------------------------------------|--|--|--|------------------|
|  | PEDESTRIAN / CYCLEWAY               |  | ACCESS FROM WATER                              |  | DISABLED PARKING |
|  | PEDESTRIAN CONNECTIONS TO THE WATER |  | PEDESTRIAN CONNECTIONS TO AMENITIES/FACILITIES |  | AMENITIES        |
|  |                                     |  |  |  | Vignette View    |



View 1: View of the Walkway & Sunrise Bridge from the water  
 View 2: The Pier from the large water steps  
 View 3: From the edge of the Lake Splash Pool towards the Solar Tower



"Picnic Point Recreation Park will reinforce The Entrance as a balanced and healthy alternative to other coastal towns"



View 1: View of Skate Park looking north



**LEGEND**

- 1 Skate/BMX/Scooter Park
- 1a Seating and Observation Area
- 1b Picnic Areas
- 2 Adventure Bike Trail
- 3 Childrens Playground
- 4 Multiuse Community facilities including amenities
- 5 Concession Stands
- 6 Boating Amenities and Seating
- 7 Multi Use Lawn
- 8 Boat Ramp
- 9 Temporary Boat Parking
- 10 Informal Picnic Spaces
- 11 Dog Park
- 11a Entry to Dog Park
- 12 Public Carpark
- 13 Vehicular Entry
- 14 Pedestrian Entry
- 15 Public Art site
- 16 Foreshore Plaza Promenade
- 17 Exercise Stations
- 17 Picnic Point Recreational Park